

# → GEMINI VEKA SOFT LINE 82

PVC-aluminium system

Aluminium cover system  
for windows made using  
PVC Veka Soft Line 82

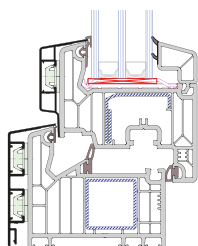
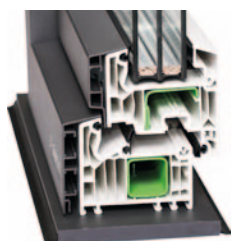


## PVC-ALU GEMINI

The GEMINI systems are suitable for VPC-ALU windows, and are based entirely on the construction designs of PVC manufacturers and rely on the perfect fit of aluminium cover profiles with their products. This creates optic elegance and maintains the highest thermal properties. Implementing exterior aluminium elevates the UV radiation and atmospheric level of protection. It also allows one to fit and unify the external colour scheme and overall design of windows made for aluminium or wood-alu carpentry.

## AVAILABLE CONSTRUCTIONS:

- Tilt & turn windows
- Tilt & slide windows (PSK)
- Fixed windows
- Mullions and transoms
- Removable mullions
- Construction crosspieces
- Balcony doors
- Inward opening doors
- Outward opening doors
- Lift & slide doors (Vekaslide)



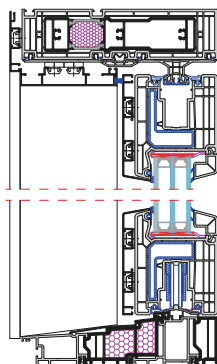
## → System features

Welded corner connection

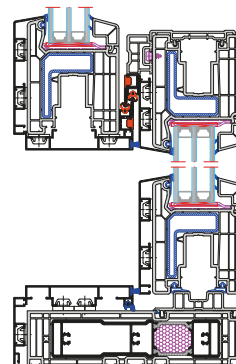
Punched corner connection



Sliding door – Vekaslide



Open sash cross-section  
(vertical)



Open sash cross-section  
(horizontal)