

# IW 50

facade with integrated window

The IW 50 system is designed for a facade build with an **integrated, inward opened sash** which comes in 3 versions: tilt&turn, turn and tilt with concealed hinge. In an outside view, the sash is indistinguishable from fixed windows, therefore does not break the facade layout. This solution greatly enhances building aesthetics while providing ventilation solutions. Design and comfort combined into one.

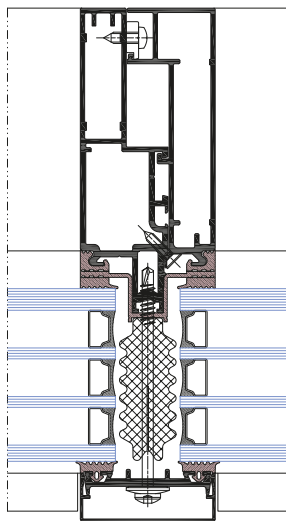


## THE IW50 SYSTEM HAD BEEN DEVELOPED IN FIVE VARIATIONS, EACH FOR A SPECIFIC FACADE OPTION:

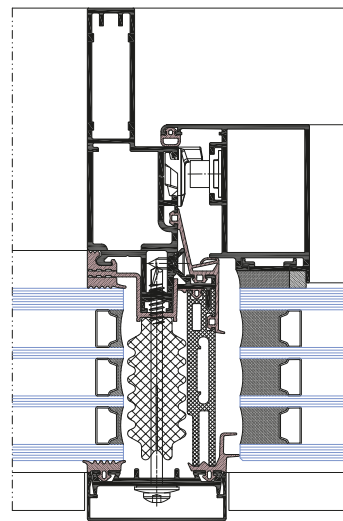
- IW AF 50 (shown in drawings)
- IW AF 50S
- IW AF 50KW
- IW ATF 50
- IW ATF 50S

### SELECTED FEATURES AND SYSTEM PARAMETERS

Mullion and transom profile width (outside)	50 mm
Mullion and transom profile width with sash (inside)	80 mm
Mullion and transom profile depth	70 to 210 mm
Glazing range	28 to 64 mm
Waterproof	E 1800 Pa
Air permeability	4 class
Wind load resistance	C5/B5
Thermal insulation Uw	from 0,51 W/m <sup>2</sup> K
Security study	+/- 3600 Pa



Mullion below the integrated window with supplementary profile



Mullion with integrated window